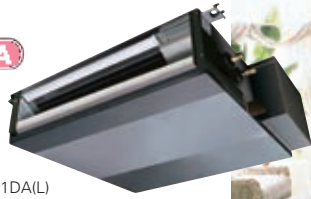


SEZ SERIES

R32
R410A

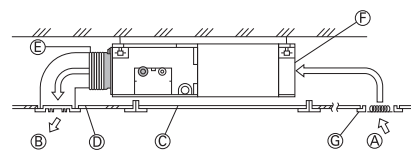
SEZ-M25-71DA(L)



This concealed ceiling-mounted indoor unit series is compact, and fits easily into rooms with lowered ceilings. Highly reliable energy-saving performance makes it a best match choice for concealed unit installations.

Compact Ceiling-concealed Units

Only the intake-air grille and outlet vents are visible when using this ceiling-concealed indoor unit. The rest of the unit is conveniently hidden in the ceiling cavity, essentially leaving the ceiling and walls free of bulky looking devices and maintaining a high-class interior décor. The compact units require minimal space and can be installed in buildings with lowered ceilings, where exposed units were the rule in the past.



- Ⓐ Air inlet
- Ⓑ Air outlet
- Ⓒ Access door
- Ⓓ Ceiling surface
- Ⓔ Canvas duct
- Ⓕ Air filter
- Ⓖ Inlet grille

Selection of Fan Speeds and Static Pressure Levels

DC fan motor settings have been increased to accommodate more application needs. Three fan speed settings (Low, Medium and High) and four static pressure levels (5, 15, 35 and 50Pa) are now available.

SEZ-M25-71DA(L)

5/15/35/50 Pa

Four Levels Available for All Models

We've lowered the minimum static pressure level, resulting in less room noise when the optimum static pressure is selected.

SPL (Low Fan Mode)	
SEZ-M	
External Static Pressure	15 Pa
35	23dB
50	30dB
60	30dB
71	30dB

Drain Pump (Optional)

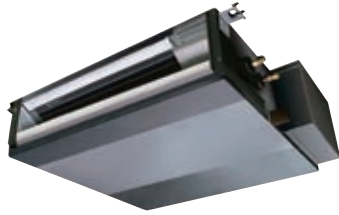
The PAC-KE07DM-E drain pump is now available as an option.

With the pump, a drain hose length of up to 550mm can be used, adding to increased installation possibilities.

SEZ-M SERIES



Indoor Unit



SEZ-M25/35/50/60/71DA (Requires Wired Remote Controller)
SEZ-M25/35/50/60/71DAL (Wireless Remote Controller is enclosed)

Outdoor Unit



Remote Controller



Type		Inverter Heat Pump						
Indoor Unit		SEZ-M25DA	SEZ-M35DA	SEZ-M50DA	SEZ-M60DA	SEZ-M71DA		
Outdoor Unit		SUZ-M25VA	SUZ-M35VA	SUZ-M50VA	SUZ-M60VA	SUZ-M71VA		
Refrigerant		R32*1						
Power Supply		Outdoor power supply						
Source		230 / Single / 50						
Outdoor (V/Phase/Hz)								
Cooling	Capacity	Rated	kW	2.5	3.5	5.0	6.1	7.1
		Min - Max	kW	1.4 - 3.2	0.7 - 3.9	1.1 - 5.6	1.6 - 6.3	2.2 - 8.1
	Total Input	Rated	kW	0.71	1.00	1.54	1.84	2.15
	Design Load		kW	2.5	3.5	5.0	6.1	7.1
	Annual Electricity Consumption*2		kWh/a	165	207	290	386	452
	SEER*3			5.3	5.9	6.0	5.5	5.5
		Energy Efficiency Class		A	A+	A+	A	A
Heating (Average Season)	Capacity	Rated	kW	2.9	4.2	6.0	7.4	8.0
		Min - Max	kW	1.3 - 4.2	1.1 - 5.0	1.5 - 7.2	1.6 - 8.0	2.0 - 10.2
	Total Input	Rated	kW	0.80	1.07	1.61	2.04	2.28
	Design Load		kW	2.2	2.6	4.3	4.6	5.8
	Declared Capacity	at reference design temperature	kW	2.0 (-10°C)	2.3 (-10°C)	3.8 (-10°C)	4.1 (-10°C)	5.2 (-10°C)
		at bivalent temperature	kW	2.0 (-7°C)	2.3 (-7°C)	3.8 (-7°C)	4.1 (-7°C)	5.2 (-7°C)
		at operation limit temperature	kW	2.0 (-10°C)	2.3 (-10°C)	3.8 (-10°C)	4.1 (-10°C)	5.2 (-10°C)
	Back Up Heating Capacity		kW	0.2	0.3	0.5	0.5	0.6
Annual Electricity Consumption*2		kWh/a	807	884	1499	1525	2072	
SCOP*3			3.8	4.1	4.0	4.2	3.9	
		Energy Efficiency Class		A	A+	A+	A+	A
Operating Current (max)		A		7.2	9.0	14.2	15.5	15.7
Indoor Unit	Input	Rated	kW	0.04	0.05	0.07	0.07	0.10
		Operating Current (max)	A	0.40	0.50	0.70	0.70	0.90
	Dimensions <Panel>	H x W x D	mm	200 - 790 - 700	200 - 990 - 700	200 - 990 - 700	200 - 1190 - 700	200 - 1190 - 700
	Weight <Panel>		kg	18	21	23	27	27
	Air Volume [Lo-Mid-Hi]		m³/min	6 - 7 - 9	7 - 9 - 11	10 - 13 - 15	12 - 15 - 18	12 - 16 - 20
	External Static Pressure		Pa	5 / 15 / 35 / 50	5 / 15 / 35 / 50	5 / 15 / 35 / 50	5 / 15 / 35 / 50	5 / 15 / 35 / 50
	Sound Level (SPL) [Lo-Mid-Hi]		dB(A)	22 - 25 - 29	23 - 28 - 33	29 - 33 - 36	29 - 33 - 37	29 - 34 - 39
	Sound Level (PWL)		dB(A)	50	53	57	58	60
Outdoor Unit	Dimensions	H x W x D	mm	550 - 800 - 285	550 - 800 - 285	714 - 800 - 285	880 - 840 - 330	880 - 840 - 330
		Weight	kg	30	35	41	54	55
	Air Volume	Cooling	m³/min	36.3	34.3	45.8	50.1	50.1
		Heating	m³/min	34.6	32.7	43.7	50.1	50.1
	Sound Level (SPL)	Cooling	dB(A)	45	48	48	49	49
		Heating	dB(A)	46	48	49	51	51
	Sound Level (PWL)	Cooling	dB(A)	59	59	64	65	66
	Operating Current (max)		A		6.8	8.5	13.5	14.8
Breaker Size		A		10	10	20	20	20
Ext. Piping	Diameter	Liquid / Gas	mm	6.35 / 9.52	6.35 / 9.52	6.35 / 12.7	6.35 / 15.88	9.52 / 15.88
	Max. Length	Out-In	m	20	20	30	30	30
	Max. Height	Out-In	m	12	12	30	30	30
Guaranteed Operating Range [Outdoor]	Cooling	°C		-10 ~ +46	-10 ~ +46	-15 ~ +46	-15 ~ +46	-15 ~ +46
	Heating	°C		-10 ~ +24	-10 ~ +24	-10 ~ +24	-10 ~ +24	-10 ~ +24

*1 Refrigerant leakage contributes to climate change. Refrigerant with lower global warming potential (GWP) would contribute less to global warming than a refrigerant with higher GWP, if leaked to the atmosphere. This appliance contains a refrigerant fluid with a GWP equal to 1975. This means that if 1 kg of this refrigerant fluid would be leaked to the atmosphere, the impact on global warming would be 1975 times higher than 1 kg of CO₂, over a period of 100 years. Never try to interfere with the refrigerant circuit yourself or disassemble the product yourself and always ask a professional. The GWP of R410A is 2088 in the IPCC 4th Assessment Report.

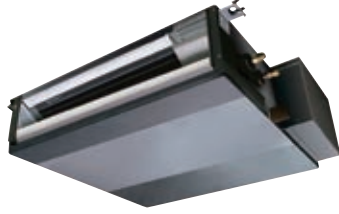
*2 Energy consumption based on standard test results. Actual energy consumption will depend on how the appliance is used and where it is located.

*3 SEER/SCOP are measured at ESP 35Pa.

SEZ-M SERIES



Indoor Unit



SEZ-M25/35/50/60/71DA (Requires Wired Remote Controller)
SEZ-M25/35/50/60/71DAL (Wireless Remote Controller is enclosed)

Outdoor Unit



SUZ-KA25/35VA6



SUZ-KA50/60/71VA6

Remote Controller



Enclosed in SEZ-M DAL



*optional (for SEZ-M DA)



*optional (for SEZ-M DA)



*optional (for SEZ-M DA)



Type		Inverter Heat Pump						
Indoor Unit		SEZ-M25DA(L)	SEZ-M35DA(L)	SEZ-M50DA(L)	SEZ-M60DA(L)	SEZ-M71DA(L)		
Outdoor Unit		SUZ-KA25VA6	SUZ-KA35VA6	SUZ-KA50VA6	SUZ-KA60VA6	SUZ-KA71VA6		
Refrigerant		R410A* ¹						
Power Supply		Outdoor power supply						
Source		230 / Single / 50						
Outdoor (V/Phase/Hz)								
Cooling	Capacity	Rated	kW	2.5	3.5	5.1	5.6	7.1
		Min - Max	kW	1.5 - 3.2	1.4 - 3.9	2.3 - 5.6	2.3 - 6.3	2.8 - 8.3
	Total Input	Rated	kW	0.730	1.010	1.580	1.740	2.210
	Design Load		kW	2.5	3.5	5.1	5.6	7.1
	Annual Electricity Consumption* ²		kWh/a	162	210	300	356	458
	SEER* ³			5.3	5.7	5.8	5.3	5.3
		Energy Efficiency Class		A	A+	A+	A	A
Heating (Average Season)	Capacity	Rated	kW	2.9	4.2	6.4	7.4	8.1
		Min - Max	kW	1.3 - 4.5	1.7 - 5.0	1.7 - 7.2	2.5 - 8.0	2.6 - 10.4
	Total Input	Rated	kW	0.803	1.130	1.800	2.200	2.268
	Design Load		kW	2.2	2.8	4.6	5.5	6.0
	Declared Capacity	at reference design temperature	kW	1.9 (-10°C)	2.5 (-10°C)	4.1 (-10°C)	4.5 (-10°C)	5.3 (-10°C)
		at bivalent temperature	kW	1.9 (-7°C)	2.5 (-7°C)	4.1 (-7°C)	4.8 (-7°C)	5.3 (-7°C)
		at operation limit temperature	kW	1.9 (-10°C)	2.5 (-10°C)	4.1 (-10°C)	4.5 (-10°C)	5.3 (-10°C)
	Back Up Heating Capacity		kW	0.3	0.3	0.5	1.0	0.7
Annual Electricity Consumption* ²		kWh/a	808	979	1653	1878	2202	
SCOP* ³			3.8	4.0	3.9	4.1	3.8	
		Energy Efficiency Class		A	A+	A	A+	A
Operating Current (max)			A	7.4	8.7	12.7	14.7	17.0
Indoor Unit	Input	Rated	kW	0.040	0.050	0.070	0.070	0.100
	Operating Current (max)		A	0.4	0.5	0.7	0.7	0.9
	Dimensions <Panel>	H x W x D	mm	200 - 790 - 700	200 - 990 - 700	200 - 990 - 700	200 - 1190 - 700	200 - 1190 - 700
	Weight <Panel>		kg	18	21	23	27	27
	Air Volume [Lo-Mid-Hi]		m ³ /min	6 - 7 - 9	7 - 9 - 11	10 - 13 - 15	12 - 15 - 18	12 - 16 - 20
	External Static Pressure		Pa	5 / 15 / 35 / 50	5 / 15 / 35 / 50	5 / 15 / 35 / 50	5 / 15 / 35 / 50	5 / 15 / 35 / 50
	Sound Level (SPL) [Lo-Mid-Hi]		dB(A)	22 - 25 - 29	23 - 28 - 33	29 - 33 - 36	29 - 33 - 37	29 - 34 - 39
	Sound Level (PWL)		dB(A)	50	53	57	58	60
Outdoor Unit	Dimensions	H x W x D	mm	550 - 800 - 285	550 - 800 - 285	880 - 840 - 330	880 - 840 - 330	880 - 840 - 330
	Weight		kg	30	35	54	50	53
	Air Volume	Cooling	m ³ /min	32.6	36.3	44.6	40.9	50.1
		Heating	m ³ /min	34.7	34.8	44.6	49.2	48.2
	Sound Level (SPL)	Cooling	dB(A)	47	49	52	55	55
		Heating	dB(A)	48	50	52	55	55
	Sound Level (PWL)	Cooling	dB(A)	58	62	65	65	69
	Operating Current (max)			A	7.0	8.0	12.0	14.0
Breaker Size			A	10	10	20	20	20
Ext. Piping	Diameter	Liquid / Gas	mm	6.35 / 9.52	6.35 / 9.52	6.35 / 12.7	6.35 / 15.88	9.52 / 15.88
	Max. Length	Out-In	m	20	20	30	30	30
	Max. Height	Out-In	m	12	12	30	30	30
Guaranteed Operating Range [Outdoor]	Cooling	°C		-10 ~ +46	-10 ~ +46	-15 ~ +46	-15 ~ +46	-15 ~ +46
	Heating	°C		-10 ~ +24	-10 ~ +24	-10 ~ +24	-10 ~ +24	-10 ~ +24

*1 Refrigerant leakage contributes to climate change. Refrigerant with lower global warming potential (GWP) would contribute less to global warming than a refrigerant with higher GWP, if leaked to the atmosphere. This appliance contains a refrigerant fluid with a GWP equal to 1975. This means that if 1 kg of this refrigerant fluid would be leaked to the atmosphere, the impact on global warming would be 1975 times higher than 1 kg of CO₂, over a period of 100 years. Never try to interfere with the refrigerant circuit yourself or disassemble the product yourself and always ask a professional. The GWP of R410A is 2088 in the IPCC 4th Assessment Report.

*2 Energy consumption based on standard test results. Actual energy consumption will depend on how the appliance is used and where it is located.

*3 SEER/SCOP are measured at ESP 35Pa.